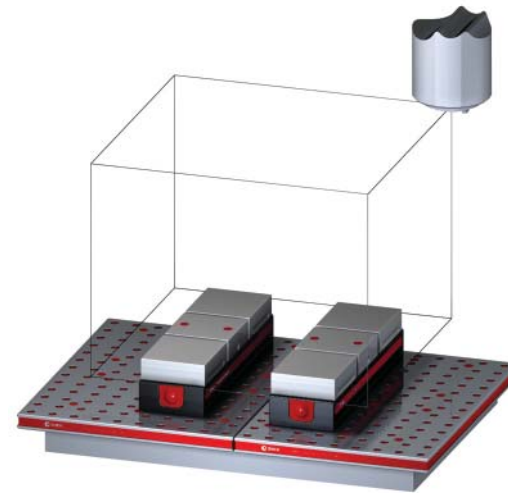


## 5VP-DECK-00060

This workholding package is designed for your DECKEL MAHO DMC 64 V machining center.

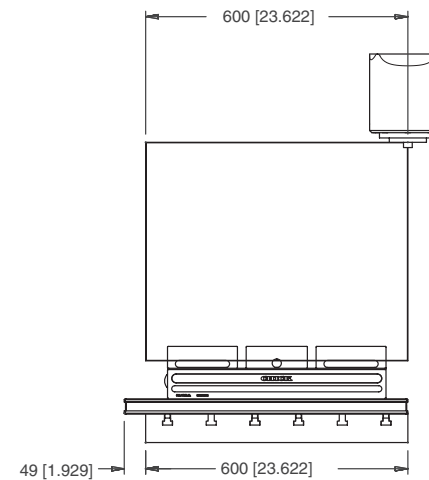
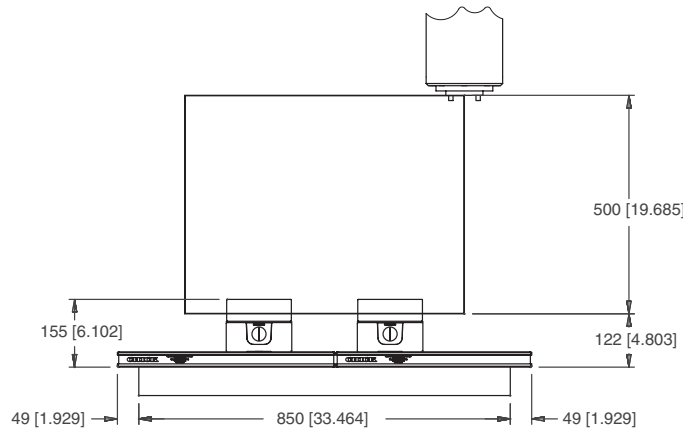
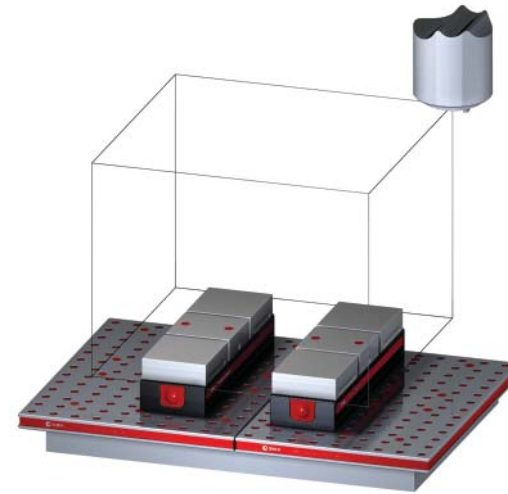
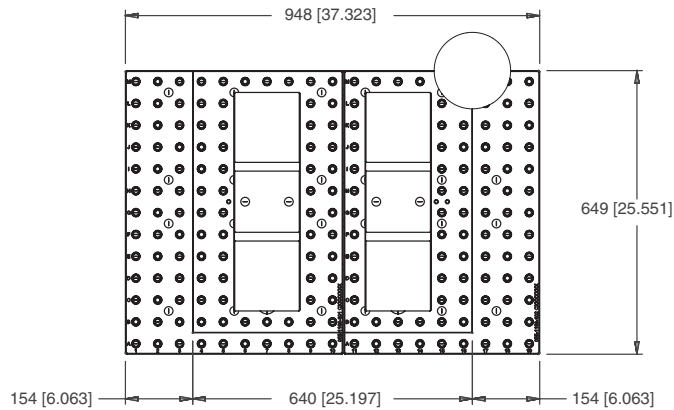


Notes

**CHICK WORKHOLDING SOLUTIONS, INC**  
500 Keystone Drive • Warrendale, PA 15086 USA  
Phone: (724) 772-1644 • Fax: (724) 772-1633  
Toll Free: (800) 33-CHICK • (800) 332-4425  
[www.ChickWorkholding.com](http://www.ChickWorkholding.com)

# 5VP-DECK-00060

This workholding package is designed for your DECKEL MAHO DMC 64 V machining center.



**Notes**

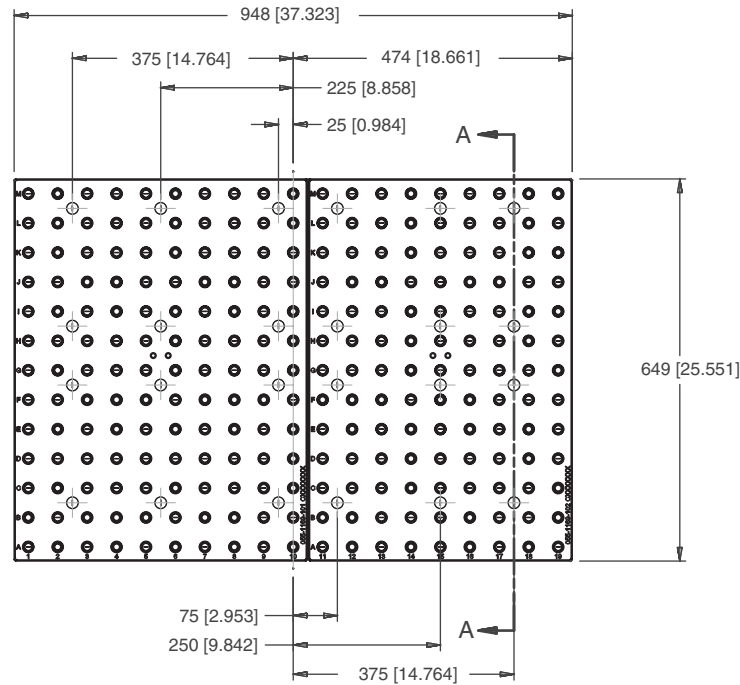
Machine travel may be limited by mechanical interference and/or machine safety zones. Please consult your machine's operating instructions for more information.

All dimensions are MM [IN]

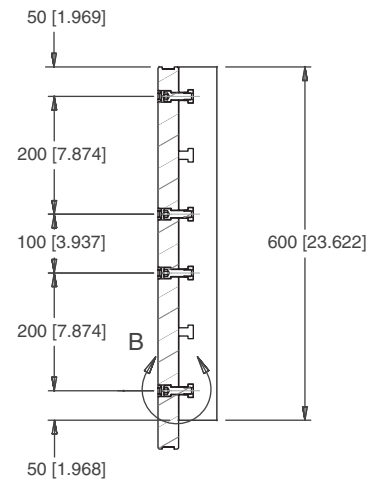
**CHICK WORKHOLDING SOLUTIONS, INC**  
 500 Keystone Drive • Warrendale, PA 15086 USA  
 Phone: (724) 772-1644 • Fax: (724) 772-1633  
 Toll Free: (800) 33-CHICK • (800) 332-4425  
[www.ChickWorkholding.com](http://www.ChickWorkholding.com)

# 5VP-DECK-00060

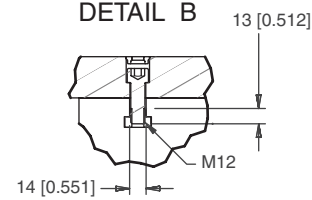
This workholding package is designed for your DECKEL MAHO DMC 64 V machining center.



## SECTION A-A



## DETAIL B



Notes  
All dimensions are MM [IN]

**CHICK WORKHOLDING SOLUTIONS, INC**  
 500 Keystone Drive • Warrendale, PA 15086 USA  
 Phone: (724) 772-1644 • Fax: (724) 772-1633  
 Toll Free: (800) 33-CHICK • (800) 332-4425  
[www.ChickWorkholding.com](http://www.ChickWorkholding.com)

# 5VP-DECK-00060

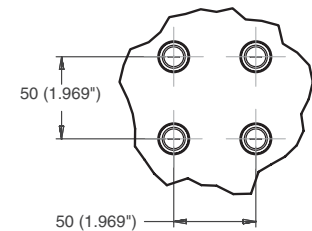
This workholding package is designed for your DECKEL MAHO DMC 64 V machining center.

FOUNDATION LENGTH, DEPTH, AND MOUNTING HOLE CONFIGURATION DESIGNED ACCORDING TO MACHINE TOOL SPECIFICATION



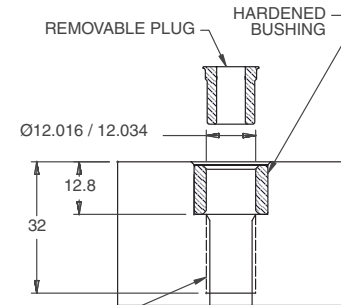
FOUNDATION MAT'L: CAST IRON  
FOUNDATION INCLUDES INSTALLATION HARDWARE

**DETAIL A**



HOLE SPACING TOLERANCE  
±0.02 TO 500mm  
±0.03 TO 1200mm

**SECTION B-B**



M12x1.75 TAP TO DEPTH SHOWN

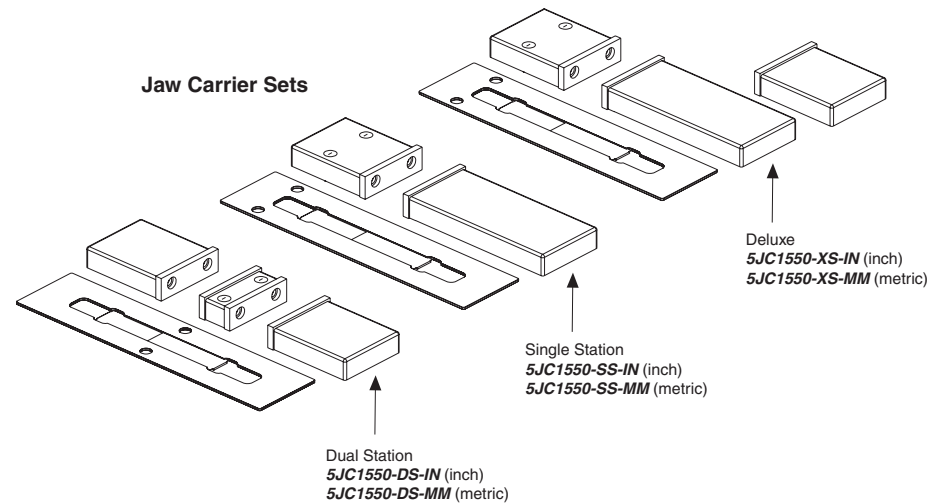
Notes  
All dimensions are MM [IN]

**CHICK WORKHOLDING SOLUTIONS, INC**  
500 Keystone Drive • Warrendale, PA 15086 USA  
Phone: (724) 772-1644 • Fax: (724) 772-1633  
Toll Free: (800) 33-CHICK • (800) 332-4425  
www.ChickWorkholding.com

## One-Off Workholding

Jaw carriers broaden your modern workholding flexibility by offering vise-like fixturing.

Simply QwikChange™ the jaws and your modern workholding is ready for one-off workholding needs.

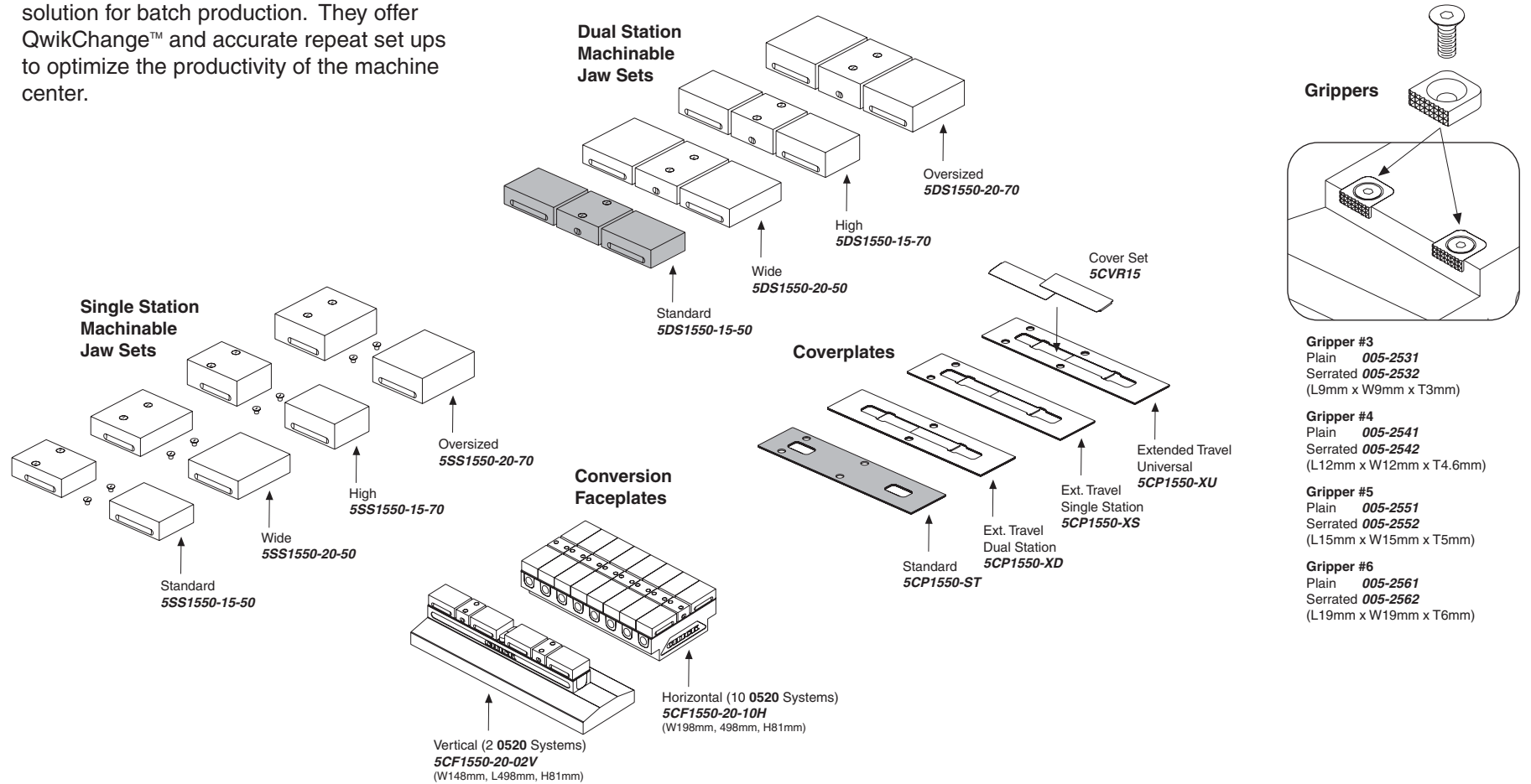


Notes

**CHICK WORKHOLDING SOLUTIONS, INC**  
 500 Keystone Drive • Warrendale, PA 15086 USA  
 Phone: (724) 772-1644 • Fax: (724) 772-1633  
 Toll Free: (800) 33-CHICK • (800) 332-4425  
[www.ChickWorkholding.com](http://www.ChickWorkholding.com)

## Batch Production

Machinable accessories are the optimal solution for batch production. They offer QwikChange™ and accurate repeat set ups to optimize the productivity of the machine center.



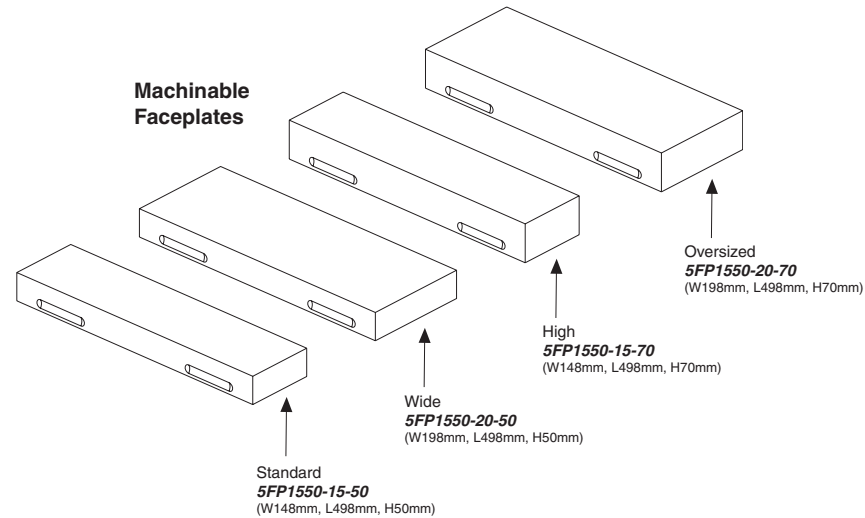
**Notes**

Grey item is included with a standard system

**CHICK WORKHOLDING SOLUTIONS, INC**  
 500 Keystone Drive • Warrendale, PA 15086 USA  
 Phone: (724) 772-1644 • Fax: (724) 772-1633  
 Toll Free: (800) 33-CHICK • (800) 332-4425  
[www.ChickWorkholding.com](http://www.ChickWorkholding.com)

## Dedicated Fixturing

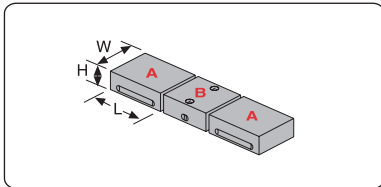
Machinable Faceplates provide QwikChange™ dedicated fixturing and are optimal for awkward or hard to hold parts. A mini pallet changer can be created by utilizing two Faceplates in tandem.



Notes

**CHICK WORKHOLDING SOLUTIONS, INC**  
 500 Keystone Drive • Warrendale, PA 15086 USA  
 Phone: (724) 772-1644 • Fax: (724) 772-1633  
 Toll Free: (800) 33-CHICK • (800) 332-4425  
[www.ChickWorkholding.com](http://www.ChickWorkholding.com)

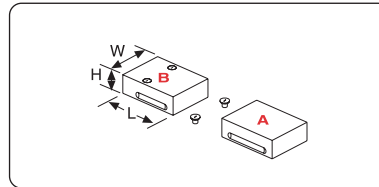
**QwikChange Machinable Dual Station Jaws**



**Individual Dual Station Jaws**

- Standard  
**A** Moveable Jaw ..... **5MJ1550-15-50**  
(W148mm, H50mm, L160mm)  
**B** Fixed Jaw ..... **5FJ1550-15-50**  
(W148mm, H50mm, L120mm)
- Wide  
**A** Moveable Jaw ..... **5MJ1550-20-50**  
(W198mm, H50mm, L160mm)  
**B** Fixed Jaw ..... **5FJ1550-20-50**  
(W198mm, H50mm, L120mm)
- High  
**A** Moveable Jaw ..... **5MJ1550-15-70**  
(W148mm, H70mm, L160mm)  
**B** Fixed Jaw ..... **5FJ1550-15-70**  
(W148mm, H70mm, L120mm)
- Oversized  
**A** Moveable Jaw ..... **5MJ1550-20-70**  
(W198mm, H70mm, L160mm)  
**B** Fixed Jaw ..... **5FJ1550-20-70**  
(W198mm, H70mm, L120mm)

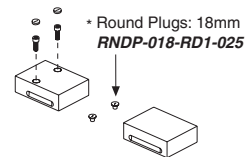
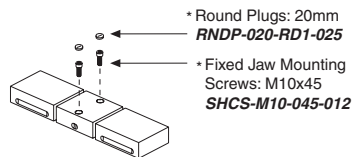
**QwikChange Machinable Single Station Jaws**



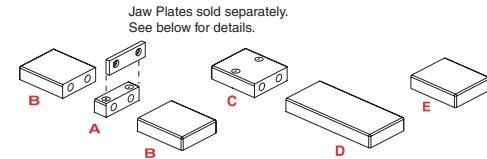
**Individual Single Station Jaws**

- Standard  
**A** Moveable Jaw ..... **5MJ1550-15-50**  
(W148mm, H50mm, L160mm)  
**B** Fixed Jaw ..... **5SJ1550-15-50**  
(W148mm, H50mm, L160mm)
- Wide  
**A** Moveable Jaw ..... **5MJ1550-20-50**  
(W198mm, H50mm, L160mm)  
**B** Fixed Jaw ..... **5SJ1550-20-50**  
(W198mm, H50mm, L160mm)
- High  
**A** Moveable Jaw ..... **5MJ1550-15-70**  
(W148mm, H70mm, L160mm)  
**B** Fixed Jaw ..... **5SJ1550-15-70**  
(W148mm, H70mm, L160mm)
- Oversized  
**A** Moveable Jaw ..... **5MJ1550-20-70**  
(W198mm, H70mm, L160mm)  
**B** Fixed Jaw ..... **5SJ1550-20-70**  
(W198mm, H70mm, L160mm)

**Screws and Plugs**



**QwikChange Jaw Carriers**



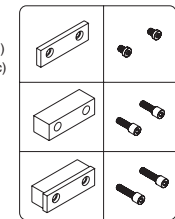
- |                        |                        |
|------------------------|------------------------|
| Jaw Carriers (Inch)    | Jaw Carriers (Metric)  |
| <b>A</b> 5JC1550-FC-IN | <b>A</b> 5JC1550-FC-MM |
| <b>B</b> 5JC1550-MC-IN | <b>B</b> 5JC1550-MC-MM |
| <b>C</b> 5JC1550-SC-IN | <b>C</b> 5JC1550-SC-MM |
| <b>D</b> 5JC1550-LM-IN | <b>D</b> 5JC1550-LM-MM |
| <b>E</b> 5JC1550-SM-IN | <b>E</b> 5JC1550-SM-MM |

- |                                |                                       |                               |
|--------------------------------|---------------------------------------|-------------------------------|
| <b>A</b> Dual Station Fixed    | <b>C</b> Single Station Fixed         | <b>E</b> Single Station Short |
| <b>B</b> Dual Station Moveable | <b>D</b> Single Station Long Moveable | <b>M</b> Moveable             |

**Jaw Plates**

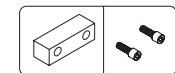
- Standard (Set of 4)  
**JH6STD** (Inch)  
**MJH15** (Metric)
- Thick (Set of 2)  
**JH6THK**
- Both Sizes  
**JH6STD** &  
**JH6THK**

**HARD JAW PLATES**



- Standard Mounting Screws:  
1/2-13x5/8"  
**LHCS-500-063-008** (Inch)  
**LHCS-M10-012-008** (Metric)
- Thick Mounting  
Screws: 1/2-13x1.25"  
**SHCS-500-125-008**
- Both Sizes Mounting  
Screws: 1/2-13x1.75"  
**SHCS-500-175-008**

**SOFT JAW PLATES**



- Standard (Set of 4)  
**JS6AL**

- Soft Mounting  
Screws: 1/2-13x1.25"  
**SHCS-500-125-012**

**Notes**

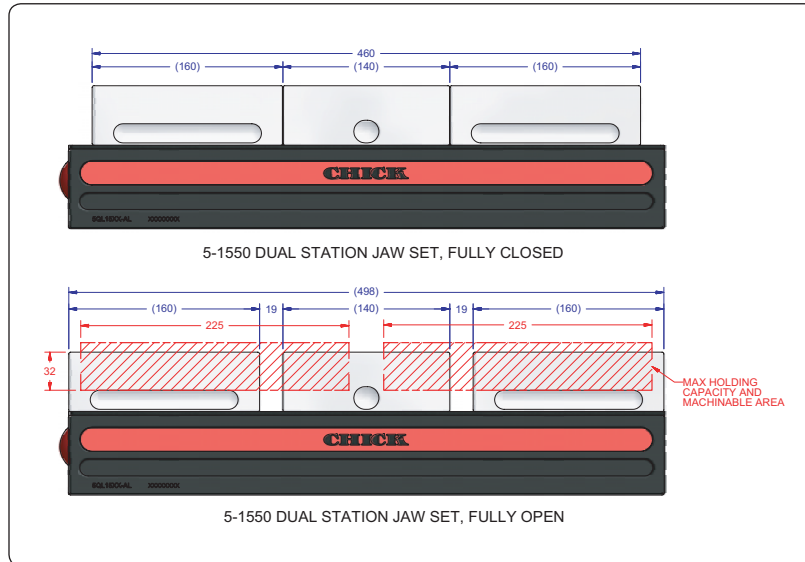
Grey or \* item is included with a standard system

**CHICK WORKHOLDING SOLUTIONS, INC**  
500 Keystone Drive • Warrendale, PA 15086 USA  
Phone: (724) 772-1644 • Fax: (724) 772-1633  
Toll Free: (800) 33-CHICK • (800) 332-4425  
www.ChickWorkholding.com

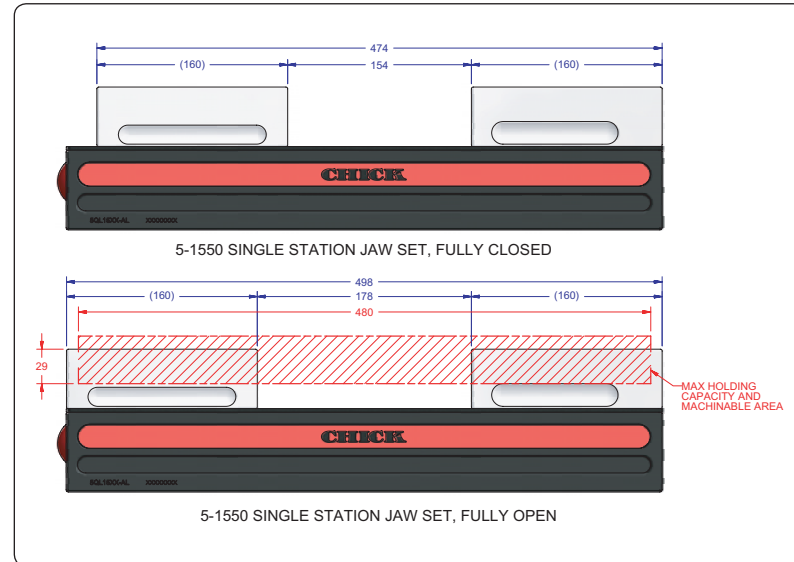




**Dual Station**



**Single Station**



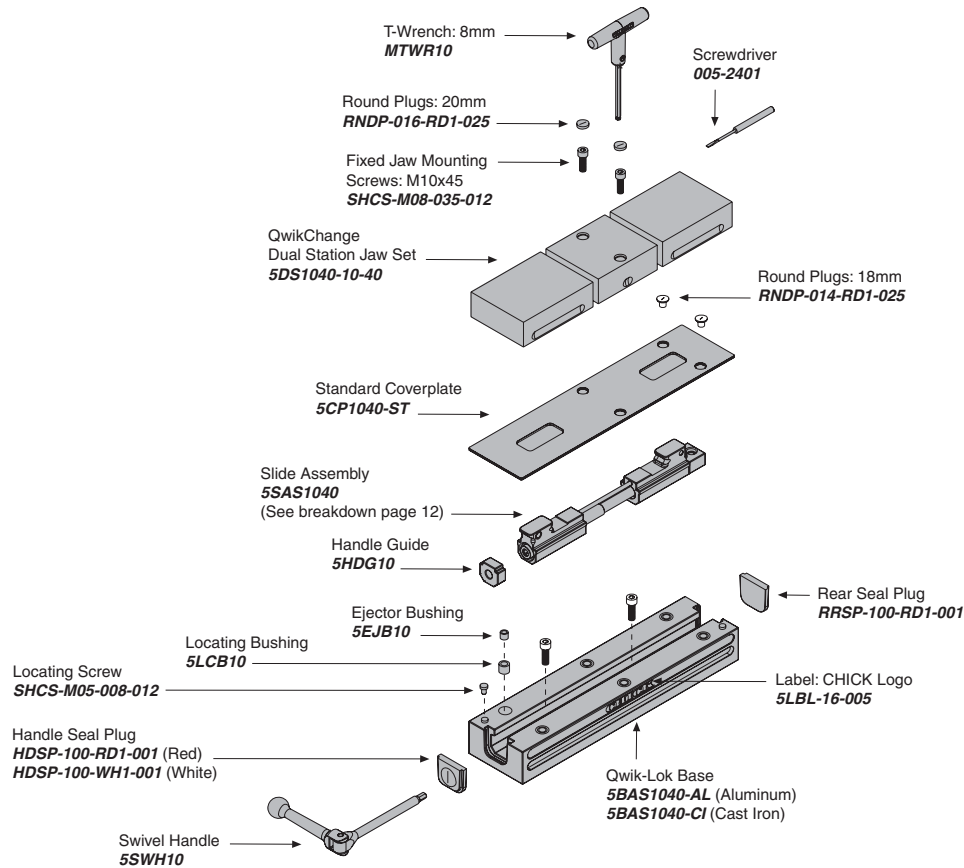
Item Number	Description	A	Jaw Width
<b>5DS1550-15-50</b>	Standard	32 [1.26]	148 [5.83]
<b>5DS1550-15-70</b>	High	52 [2.05]	148 [5.83]
<b>5DS1550-20-50</b>	Wide	32 [1.26]	198 [7.80]
<b>5DS1550-20-70</b>	Oversized	52 [2.05]	198 [7.80]

Item Number	Description	A	Jaw Width
<b>5SS1550-15-50</b>	Standard	29 [1.14]	148 [5.83]
<b>5SS1550-15-70</b>	High	49 [1.93]	148 [5.83]
<b>5SS1550-20-50</b>	Wide	29 [1.14]	198 [7.80]
<b>5SS1550-20-70</b>	Oversized	49 [1.93]	198 [7.80]

**Notes**

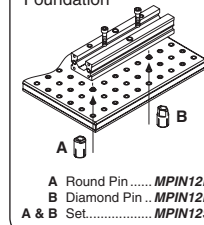
All dimensions are MM [IN]  
 Additional closure is available with an Extended Travel Coverplate.  
 Contact CHICK for details.

**CHICK WORKHOLDING SOLUTIONS, INC**  
 500 Keystone Drive • Warrendale, PA 15086 USA  
 Phone: (724) 772-1644 • Fax: (724) 772-1633  
 Toll Free: (800) 33-CHICK • (800) 332-4425  
[www.ChickWorkholding.com](http://www.ChickWorkholding.com)

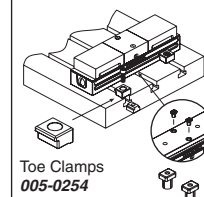


## MOUNTING

### Foundation

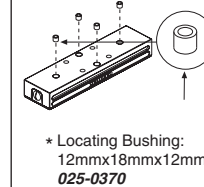


### T-Slotted Table



Bolt and T-Nut supplied by customer

### Bottom of Base



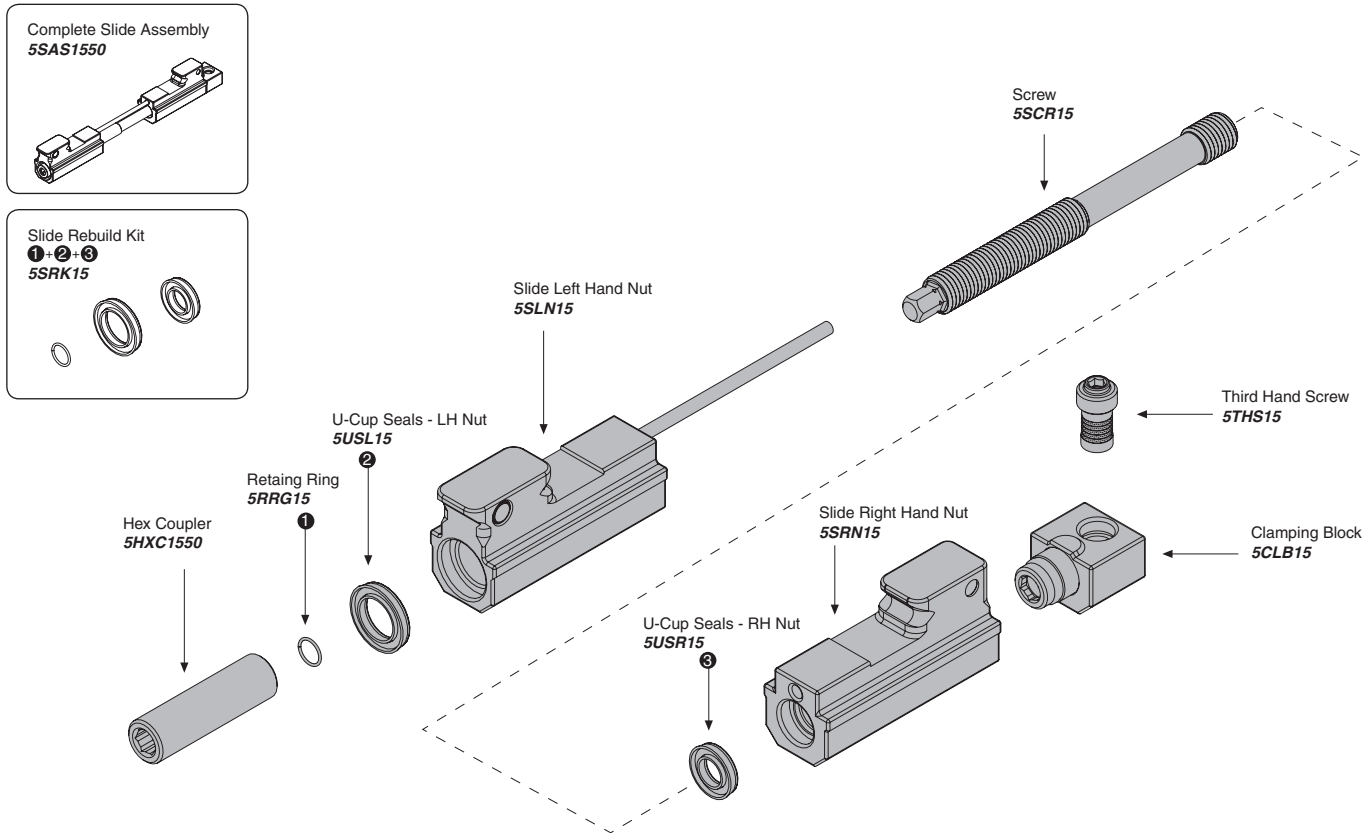
### Locating Keys

Inch Size
MKE500 (1/2")
MKE562 (9/16")
MKE625 (5/8")
MKE688 (11/16")
MKE750 (3/4")
MKE812 (13/16")
Metric Size
MKE10 (10mm)
MKE12 (12mm)
MKE14X18 (14mm)
MKE16 (16mm)
MKE20 (20mm)

## Notes

Grey items are included with a standard system  
 For QwikChange™ Jaw accessories, see pages 5-8

**CHICK WORKHOLDING SOLUTIONS, INC**  
 500 Keystone Drive • Warrendale, PA 15086 USA  
 Phone: (724) 772-1644 • Fax: (724) 772-1633  
 Toll Free: (800) 33-CHICK • (800) 332-4425  
[www.ChickWorkholding.com](http://www.ChickWorkholding.com)



**Notes**

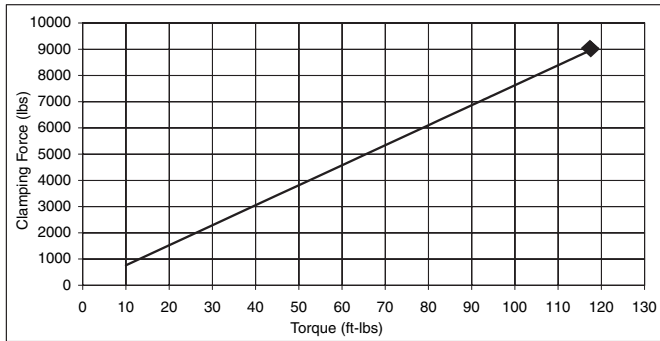
Grey items are included with a standard system

**CHICK WORKHOLDING SOLUTIONS, INC**  
 500 Keystone Drive • Warrendale, PA 15086 USA  
 Phone: (724) 772-1644 • Fax: (724) 772-1633  
 Toll Free: (800) 33-CHICK • (800) 332-4425  
[www.ChickWorkholding.com](http://www.ChickWorkholding.com)

**Pounds (lbs)**

Force	=	Torque	X	Slope
lbs	=	in-lb	x	6.4
lbs	=	ft-lbs	x	76.3

Torque (ft-lb)	Force (lbs)
0	0
10	763
20	1525
30	2288
40	3051
50	3814
60	4576
70	5339
80	6102
90	6864
95	7246
100	7627
105	8008
110	8390
115	8771
118	9000

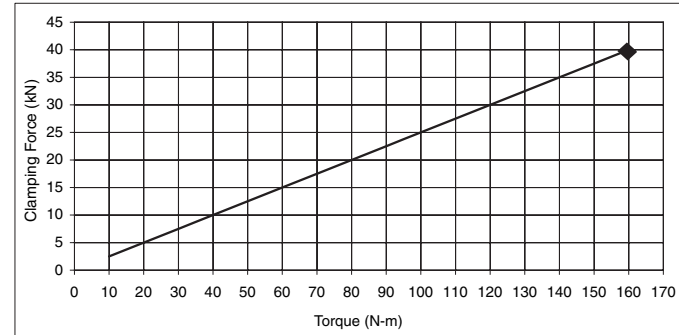


Note: ◆ Maximum Recommended Torque. Actual results may vary.

**Kilonewtons (kN)**

Force	=	Torque	X	Slope
N	=	N-m	x	250
kN	=	N-m	x	0.25

Torque (N-m)	Force (kN)
0	0.0
10	2.5
20	5.0
30	7.5
40	10.0
50	12.5
60	15.0
70	17.5
80	20.0
90	22.5
100	25.0
110	27.5
120	30.0
130	32.5
140	35.0
150	37.5
160	40.0



Note: ◆ Maximum Recommended Torque. Actual results may vary.

Notes

**CHICK WORKHOLDING SOLUTIONS, INC**  
 500 Keystone Drive • Warrendale, PA 15086 USA  
 Phone: (724) 772-1644 • Fax: (724) 772-1633  
 Toll Free: (800) 33-CHICK • (800) 332-4425  
[www.ChickWorkholding.com](http://www.ChickWorkholding.com)