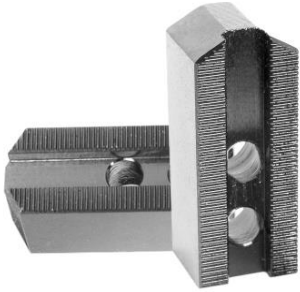


SOFT JAWS FOR KITAGAWA POWER CHUCKS TYPE: KSJ

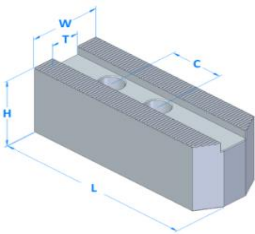


April 23- VOL: 1

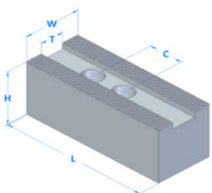
MATERIAL 080M15 (EN32)



POINTED VERSION 1



FLAT VERSION 2



NOTE

Kitagawa T-Nuts, gripper jaws, base jaws, quick change jaws and workpiece stops are available on request

STANDARD JAWS (Serrations 1.5mm x 60)

Type	Chuck Type	KG	Price	Dia mm	L	W	H	T	C	Bolt	V
KSJ-04	B04	0.5	£19.30	110	50	22	25	8	15	M6	P
KSJ-204	B204	0.5	£19.30	110	52	22	24	10	14	M8	P
KSJ-05	B05	0.85	£20.71	135	57	24	31	10	18	M8	P
KSJ-205	B205	0.75	£20.71	135	57	24	31	10	14	M8	P
KSJ-06	B06 / B206	1.2	£24.74	169	72	30	31	12	20	M10	P
KSJ-06-F	B06 / B206	1.2	£24.74	169	72	30	31	12	20	M10	F
KSJ-08	B08 / B208	2.3	£29.83	210	95	35	37	14	25	M12	P
KSJ-08-F	B08 / B208	2.3	£29.83	210	95	35	37	14	25	M12	F
KSJ-10	B10 / B210	3.6	£36.32	254	110	40	42	16	30	M12	P
KSJ-12	B12	6.7	£49.30	304	130	50	50	18	30	M14	F
KSJ-212	B212	6.5	£49.30	304	129	50	50	21	30	M16	F
KSJ-212-P	B212	6.5	£44.57	304	129	50	50	21	30	M16	P
KSJ-15/18	B15 / B18	14.5	£94.74	381	165	60	72	22	43	M20	F

EXTRA HIGH JAWS (Serrations 1.5mm x 60)

Type	Chuck Type	KG	Price	Dia mm	L	W	H	T	C	Bolt	V
KSJ-204H	B204	1.2	£29.83	110	52	24	50	10	14	M8	P
KSJ-205H	B205	1.4	£29.83	135	57	24	50	10	14	M8	P
KSJ-06H	B06 / B206	2	£32.64	169	72	30	50	12	20	M10	P
KSJ-08H	B08 / B208	5	£52.99	210	95	35	79	14	25	M12	P
KSJ-10H	B10 / B210	7	£58.43	254	110	40	79	16	30	M12	P
KSJ-10H-60-F	B10 / B210	5.2	£37.75	254	110	40	60	16	30	M12	F
KSJ-10H-60-FS	B10 / B210	4.1	£42.64	254	90	40	60	16	30	M12	F
KSJ-10H-60-P	B10 / B210	5.2	£44.57	254	110	40	60	16	30	M12	P
KSJ-12H	B12	10.5	£76.15	304	130	50	79	18	30	M14	F
KSJ-212H	B212	10.5	£76.15	304	129	50	79	21	30	M16	F

EXTRA LONG JAW (Serrations 1.5mm x 60)

Type	Chuck Type	KG	Price	Dia mm	L	W	H	T	C	Bolt	V
KSJ-06L	B06 / B206	1	£31.76	169	82	30	31	12	20	M10	P
KSJ-08L	B08 / B208	3	£40.53	210	102	35	37	14	25	M12	P
KSJ-10L	B10 / B210	4	£44.92	254	125	40	42	16	30	M12	P
KSJ-12L	B12	7	£56.85	304	145	50	50	18	30	M14	P
KSJ-212L	B212	7	£56.85	304	145	50	50	21	30	M16	P

60° POINT LONG JAW (Serrations 1.5mm x 60)

Type	Chuck Type	KG	Price	Dia mm	L	W	H	T	C	Bolt	V
KSJ-08LPPOINT	B08 / B208	2.7	£57.72	210	105	35	37	14	25	M12	LP
KSJ-10LPPOINT	B10 / B210	3	£62.29	254	125	40	42	16	30	M12	LP
KSJ-15LPPOINT	B15 / B18	13.5	£192.81	381	185	60	72	22	43	M20	LP